

Beautiful 3 Story Brick-Front Home with Classic Finishes on a Great Block



2051 Pemberton St, Philadelphia, PA 19146

- » Beds: 3 | Baths: 2 Full
- » MLS #: PAPH2096422
- » Single Family | 1,605 ft²
- » Wide open living/dining room area tons of natural light
- » Kitchen features crisp white cabinets, SS appliances & spacious center island
- » More Info: 2051PembertonSt.com



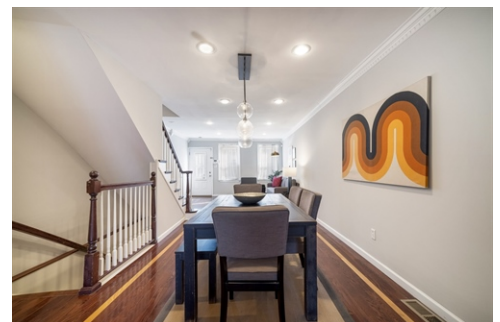
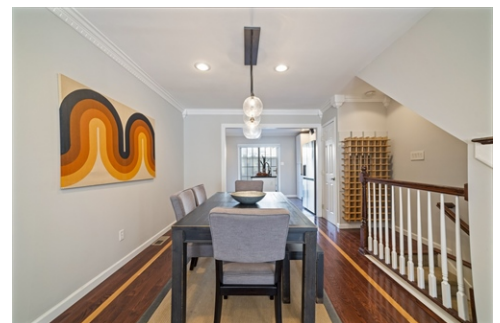
Eric Fox
 (267) 625-4504 (Eric Cell)
 eric@efoxhomes.com
 http://www.efoxhomes.com



THE ERIC FOX TEAM

Compass
 1430 Walnut Street
 3rd Floor
 Philadelphia, PA 19102
 (267) 435-8015

\$ 680,000



Located on a quiet side street in the heart of Graduate Hospital, 2051 Pemberton St is a beautiful 3 story brick-front home with classic finishes on a great block. Enter into the freshly painted wide open living/dining room area with two south-facing windows, crown moldings, hardwood flooring and recessed lighting. The floorplan flows into a dining area with a trendy overhead light fixture, and then into the kitchen. The kitchen features crisp white cabinetry and stainless steel appliances, plus a spacious center island, perfect for entertaining or countertop dining. Additional kitchen features include granite counters, ample cabinet and counter space, and a fun tiled backsplash. Exit the kitchen through sliding glass doors onto a decked patio, perfect for al fresco dining or container gardening. The second level of this home features two spacious bedrooms and a shared hallway bathroom which is complete with full sized stackable washer and dryer. Both bedrooms are bright and spacious, and feature hardwood floors and fantastic closet space as well. The hall bathroom is neutrally tiled, and has a tub/shower combo along with a vanity plus an extra built-in storage closet alongside. The third level features the extra spacious primary bedroom and bathroom plus a large walk-in closet. The bedroom features grass-cloth wallcovering, hardwood floors, recessed lighting, a ceiling fan, and a large South facing window. The bathroom has a walk-in

